

ExWyZee Remedial Reading

ExWyZeeRemedialReading.com

ExWyZeeReading@gmail.com

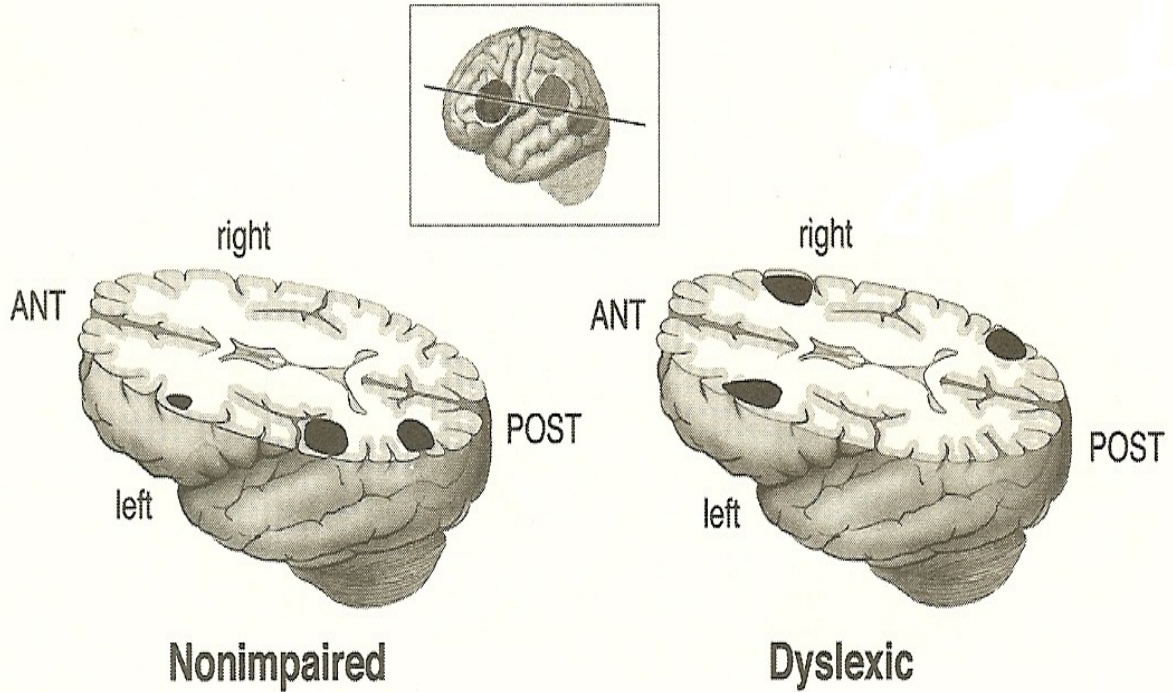


Figure 27. Dyslexic Readers Use Compensatory Systems to Read

The nonimpaired reader, on the left, activates neural systems that are mostly in the back of the left side of the brain; the dyslexic reader, on the right, activates systems on the right side and in the front of the brain on the left.

The ExWyZee REMEDIAL READING COMPUTER PROGRAM
A program for use by parents of reading impaired students
See details on ExWyZeeReading.com
ExWyZeeReading@gmail.com